

SOUVENIR OF

COLUMBUS



COLUMBUS

Columbus, the capital city of Ohio, was founded by Lucas Sullivant in the year 1797. It is situated on the east bank of the Scioto River and is a thriving city of 130,000 inhabitants. It is an important commercial center and manufactures iron and steel goods, agricultural implements, carriages and shoes, to the amount of thirty millions of dol-

lars annually. It has 120 miles of improved streets, broader and better paved than those of any city in the United States with the single exception of Washington. Broad Street, the leading thoroughfare, with its beautiful parks and handsome residences, and shaded by great trees that were old when the State was young, stretches away for seven miles, affording a drive that reminds one more of the avenues about Versailles than the street of a busy nineteenth century city. The city is noted for its charitable institutions, among which are the Ohio State Hospital, and the State Institutions for the Blind, Deaf and Dumb, and the Feeble-minded. The capitol, a stately and imposing structure, built in the Greek style of architecture, stands in a beautiful park in the center of the city.

These grounds are shady and well kept, and furnish a splendid play-ground for the colony of gray squirrels that live therein. At the northwest corner of the building stands a group of bronze statues that stood originally in front of the Ohio building at the World's Fair in Chicago and known as "Ohio's Jewels." The heroic figures of Grant, Sherman, Sheridan, Stanton, Chase, Garfield and Hayes that constitute this group make perhaps the most attractive and magnificent tribute yet erected by the State to the memory of these great Sons. A Memorial gateway, now in process of construction at the main entrance of the State House grounds, will, when complete, commemorate as beautifully the life and public services of William McKinley. At the eastern part of the city are the United States Barracks. Across from this and to the northward is the Ohio State University, with its broad and expansive campus, its beautiful and commodious

buildings and laboratories, and its 2000 students. The Union Station, one of the finest and most perfectly appointed depots in the country, fully accommodates the eighteen railroads bringing 148 passenger trains daily into its portals, and meets all the demands of the people of the city.

PUBLISHED EXCLUSIVELY FOR

F. M. KIRBY & CO.

COLUMBUS, OHIO.



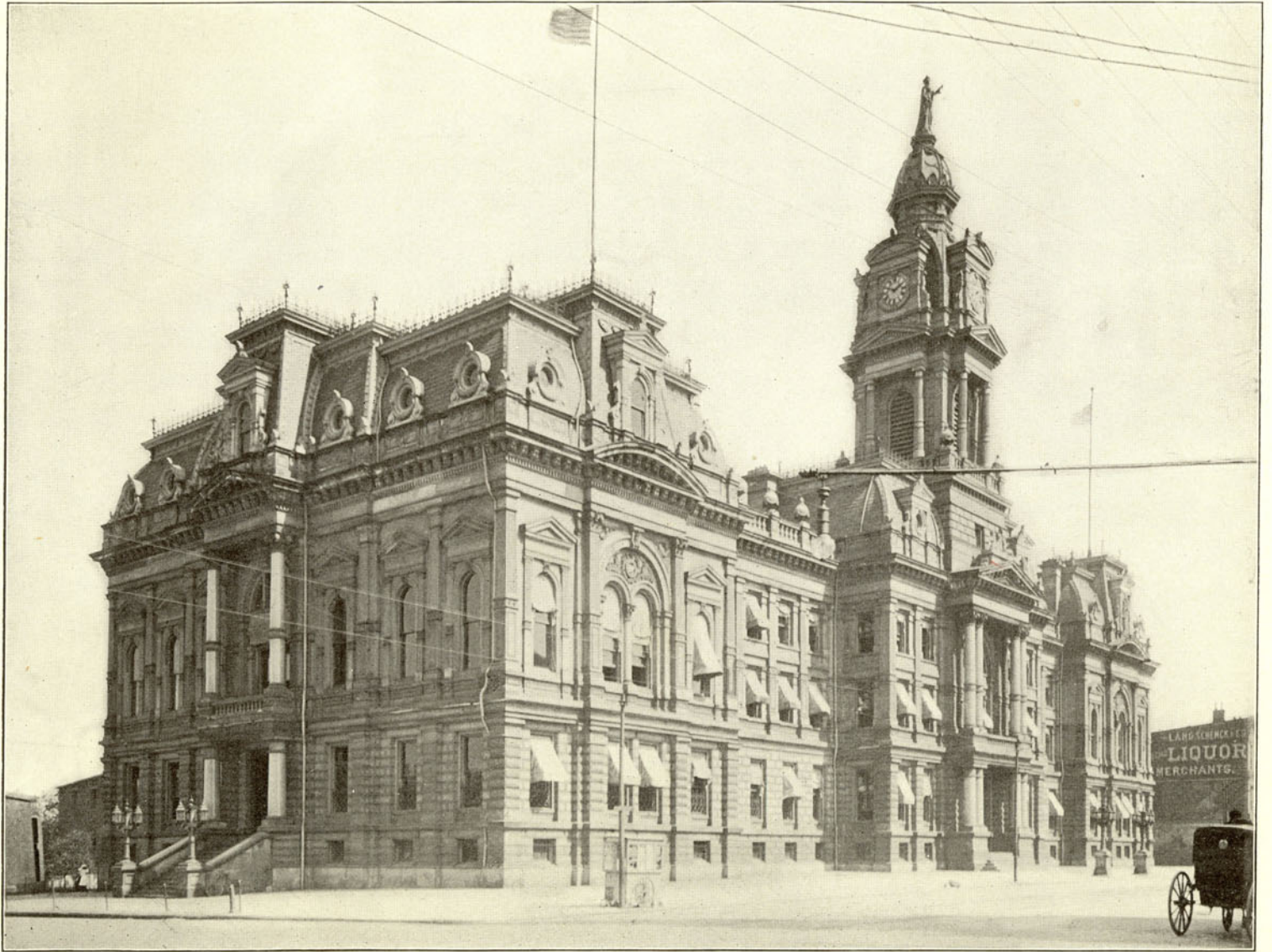
THE UNION STATION



THE OHIO STATE CAPITOL



OHIO'S JEWELS



THE COURT HOUSE



HIGH STREET



BROAD STREET



THE FIRST CONGREGATIONAL CHURCH



HIGH STREET AND THE SOUTHERN HOTEL



THE BOARD OF TRADE



THE YOUNG MEN'S CHRISTIAN ASSOCIATION



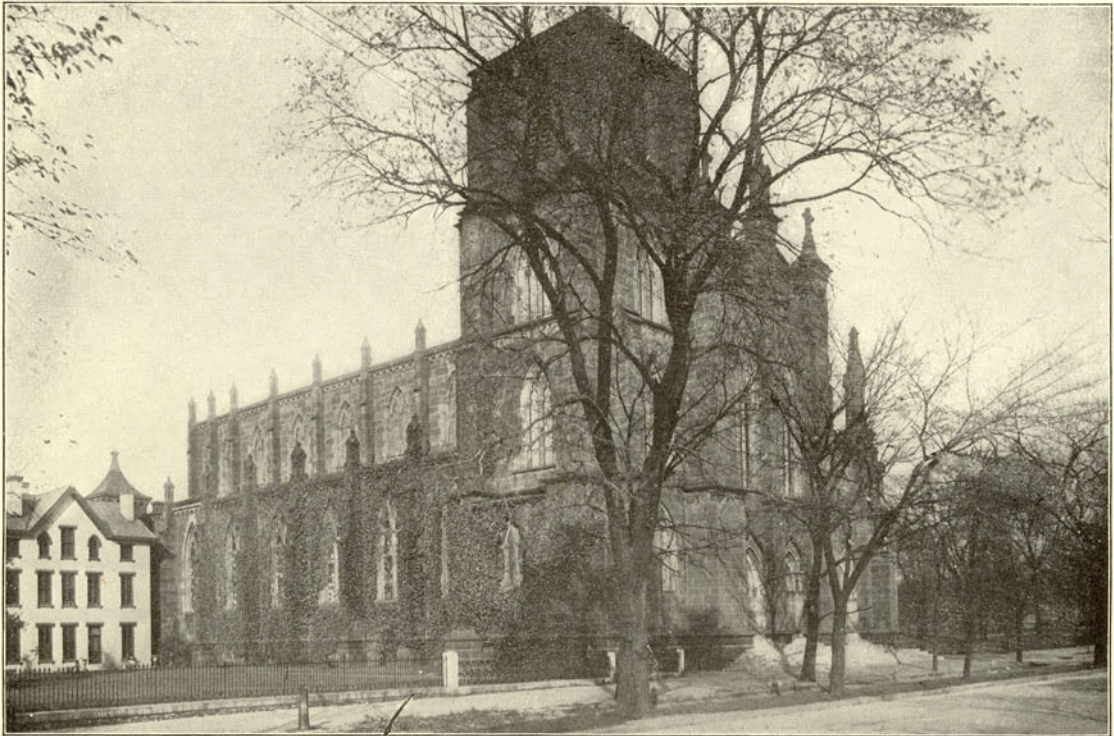
THE MASONIC TEMPLE



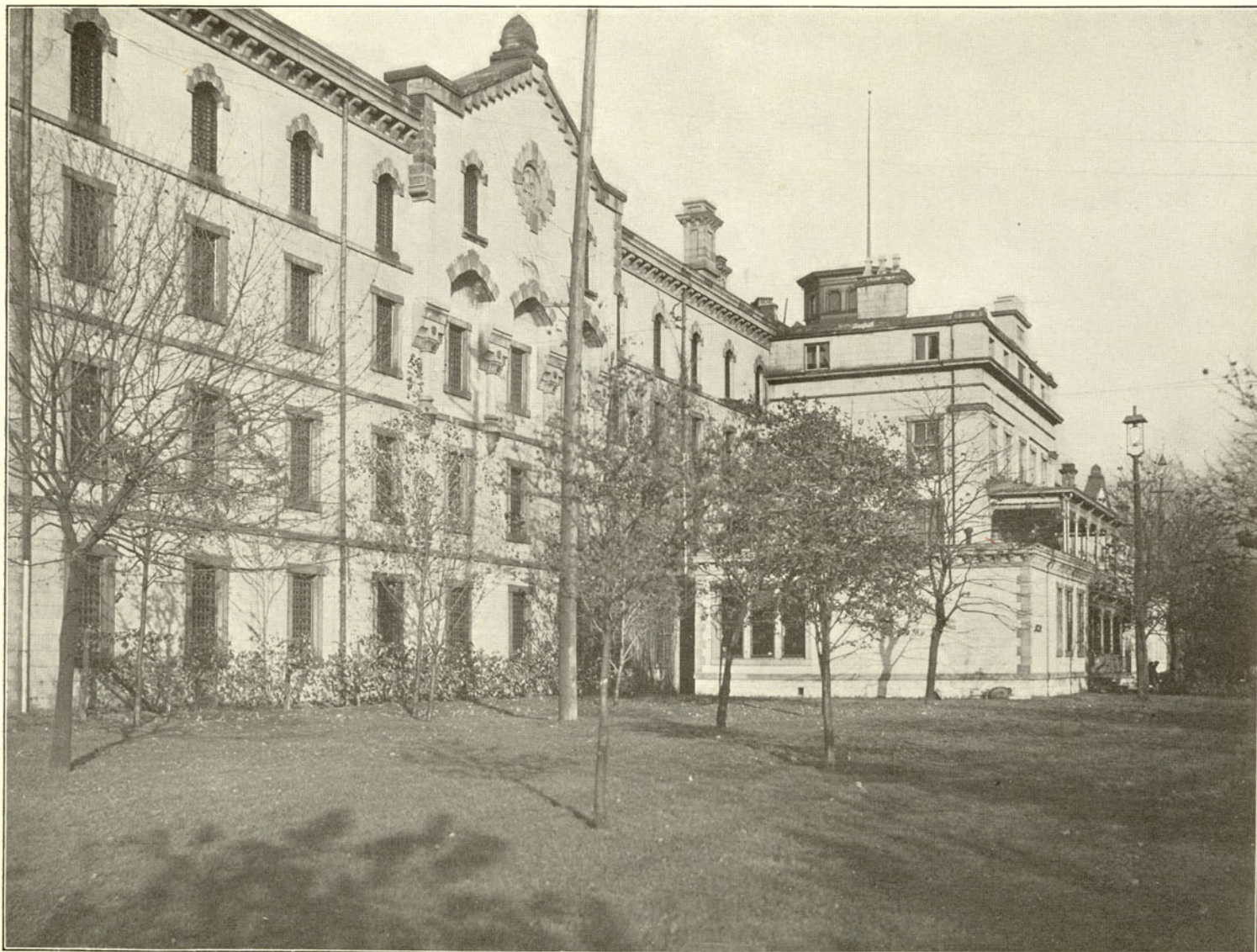
THE CHITTENDEN HOTEL



BROAD STREET BAPTIST CHURCH



THE CATHEDRAL



THE STATE PENITENTIARY



THE UNITED STATES BARRACKS



THE PARADE GROUND, UNITED STATES BARRACKS



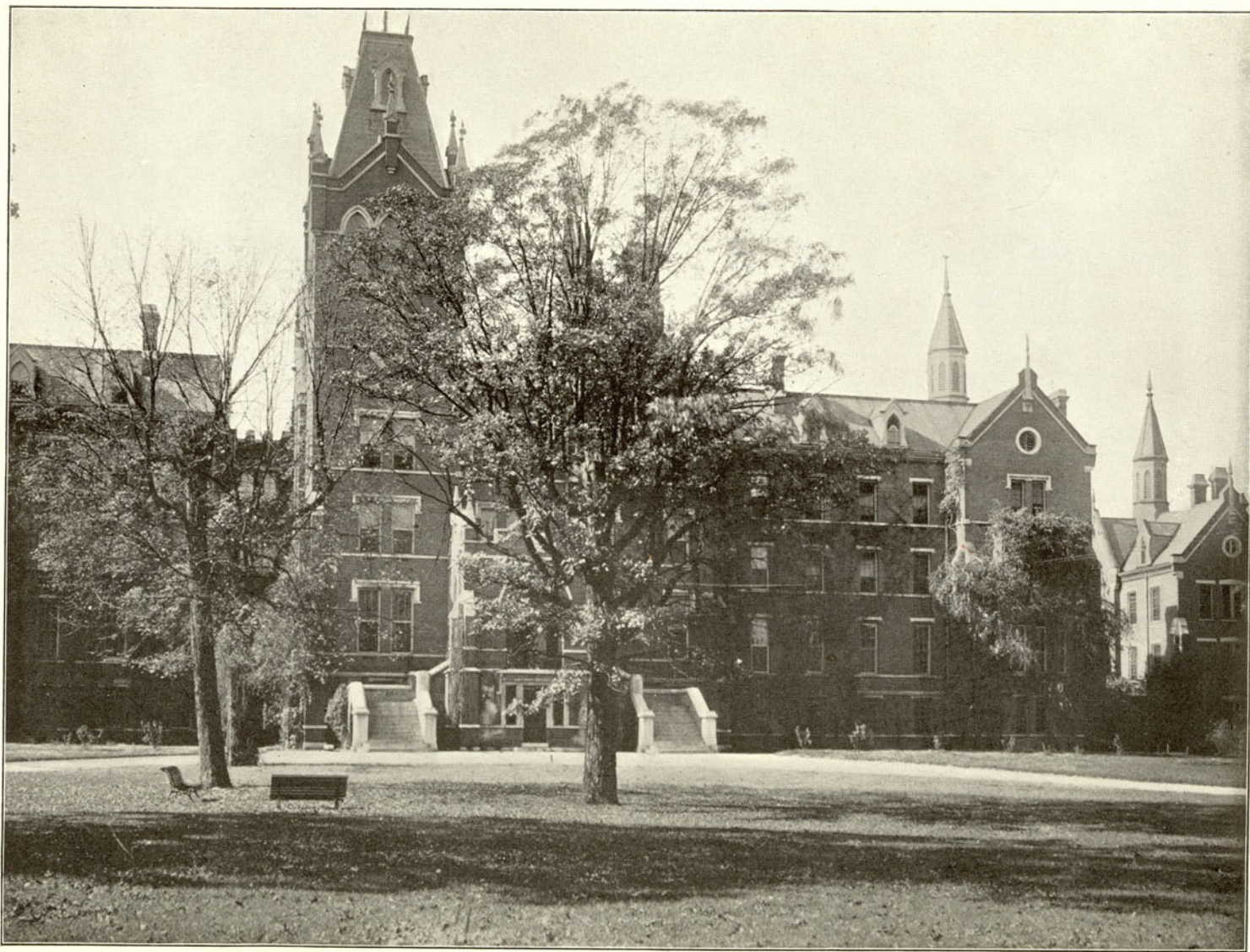
THE LAKE, FRANKLIN PARK



A ROAD IN FRANKLIN PARK



THE CONSERVATORY, FRANKLIN PARK



STATE INSTITUTION FOR THE IMBECILE



ASYLUM FOR THE INSANE



THE BLIND ASYLUM



DEAF AND DUMB ASYLUM



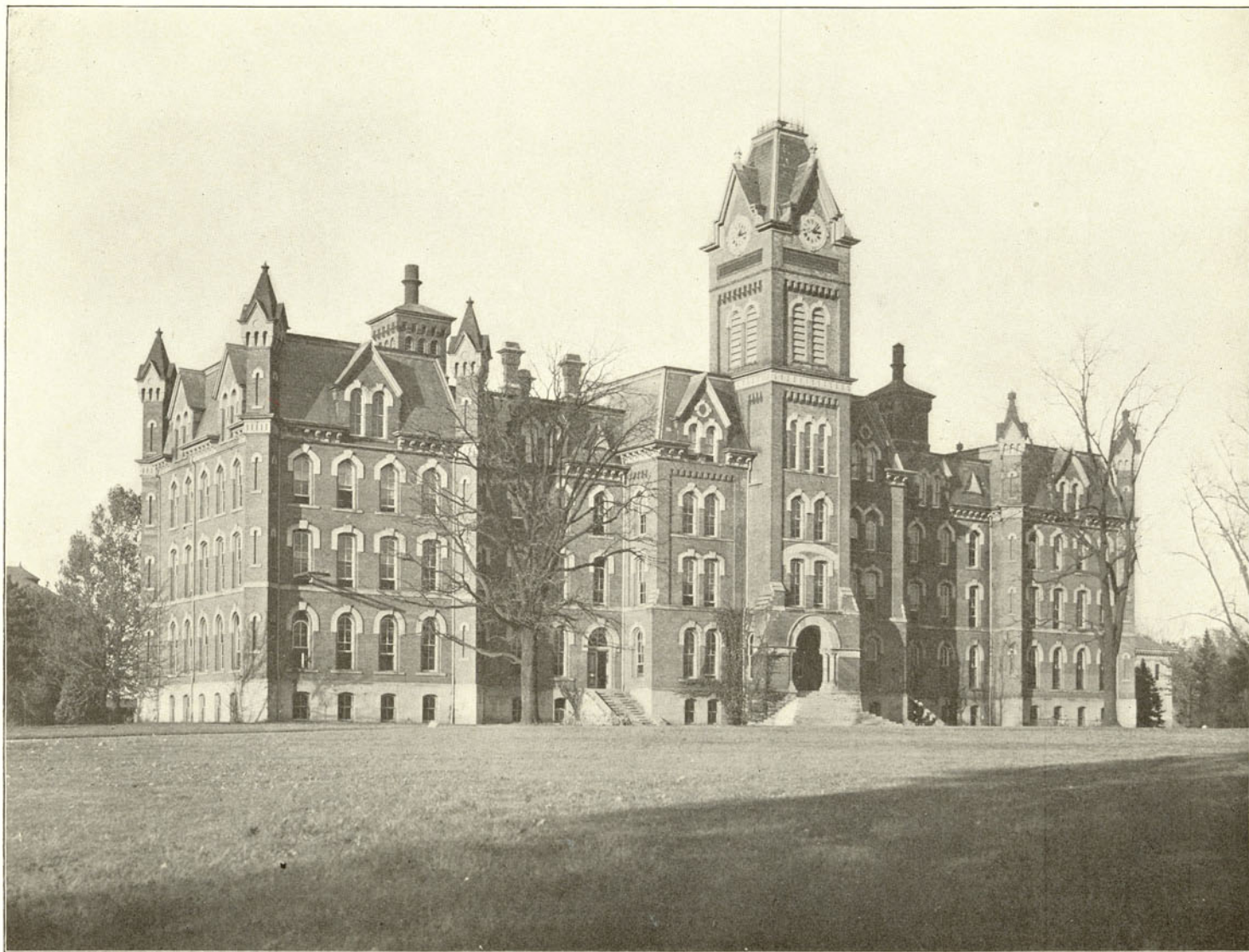
ST. ANTHONY'S HOSPITAL



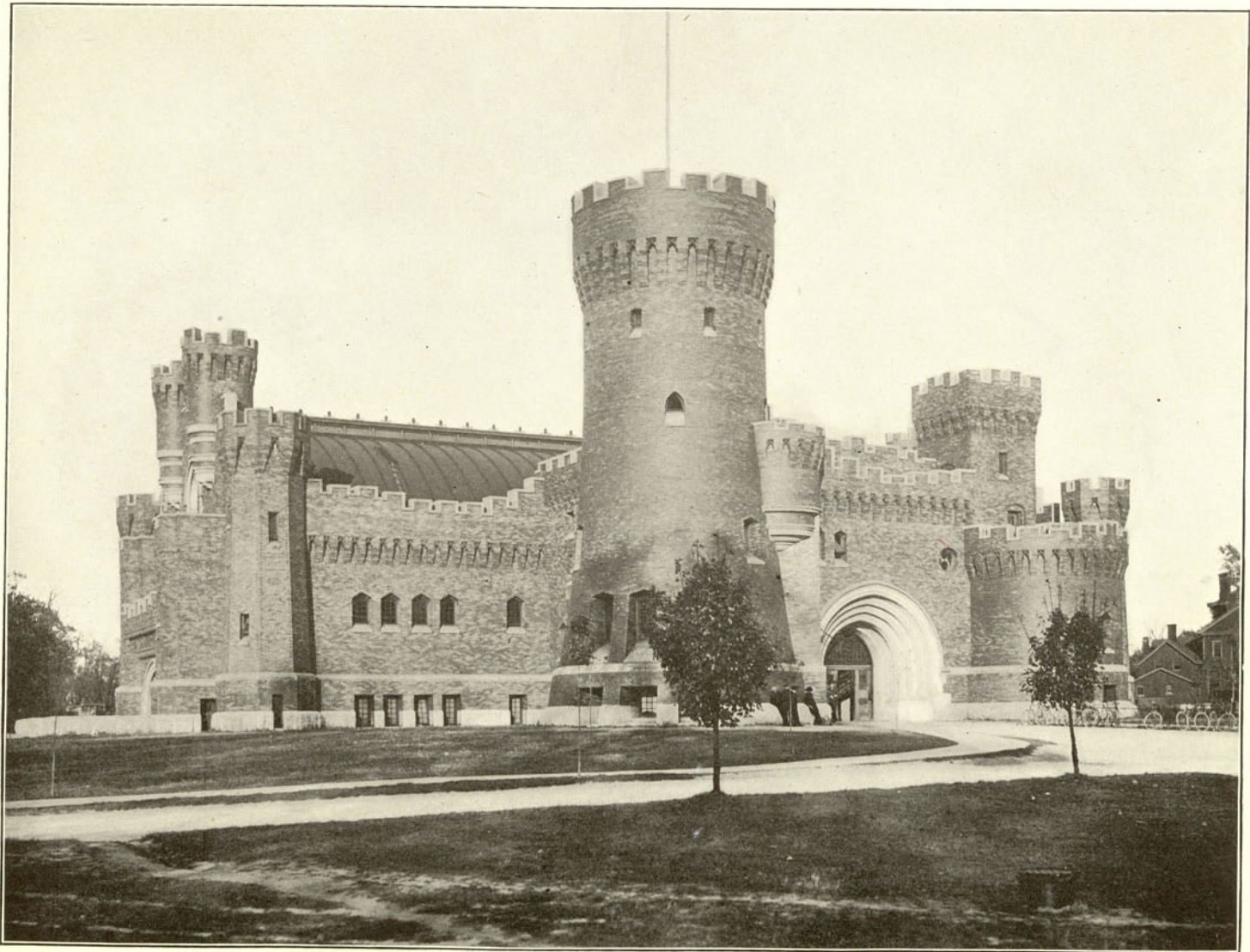
THE SPRING, OHIO STATE UNIVERSITY



THE CAMPUS, OHIO STATE UNIVERSITY



UNIVERSITY BUILDING, OHIO STATE UNIVERSITY



THE ARMORY AND GYMNASIUM, OHIO STATE UNIVERSITY



HAYES HALL, OHIO STATE UNIVERSITY



PAGE HALL, OHIO STATE UNIVERSITY



THE BOAT LANDING, OLENTANGY PARK



THE STATE FAIR

COPYRIGHT 1903
J. MURRAY JORDAN
1428 S. PENN SQUARE
PHILADELPHIA, PA.